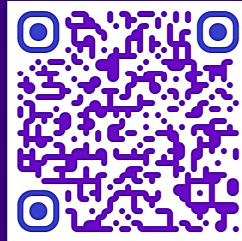
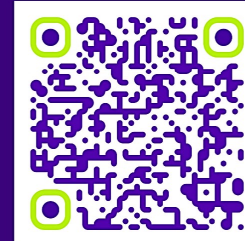


Throw Yourself into Judo

ST STEPHEN'S PRIMARY SCHOOL



TUESDAYS
YEARS 1 - 3
07:45 - 08:45



THURSDAYS
YEARS 4 - 6
07:45 - 08:45

Starting the w/c 13th January

10 WEEKS OF JUDO FOR £110

FOR MORE INFORMATION CONTACT
INFO@IPPONJUDOLONDON.COM

